

# The Global Health Initiative (GHI) at Mailman School of Public Health and The Columbia Global Policy Initiative



## RESPONDING TO HUMANITARIAN EMERGENCIES: NEW IMPERATIVES

### Featured speaker:

**FOUAD M. FOUAD, MD**

Assistant Research Professor  
Faculty of Health Sciences  
American University of Beirut

### Panelists:

Wafaa El-Sadr, MD, MPH, MPA ICAP & GHI  
Moderator

Alastair Ager, PhD, Forced Migration and Health  
Mark Fussell, MPA, ICAP at Columbia University  
Therese McGinn, DrPH, RAISE Initiative







# Definitions

## Refugee

- Any person who owing to well-founded fear of being persecuted for reasons of race, religion, nationality, membership of particular social group or political opinion is outside the country of his nationality....

Refugee convention, 1951



## Internally Displaced Person (IDP)

- Persons who flee their homes for similar reasons as refugees but who remain inside their own countries

## Displaced Persons (DPs)

- Refugees and/or IDPs



# Global human displacement

Spiralling global conflicts and worldwide instability have forced millions of people to leave their homes and seek refuge either abroad or in their own countries. The latest figures do not include the wars in Sri Lanka and Pakistan's Swat valley, which have displaced thousands more

## Who's who?

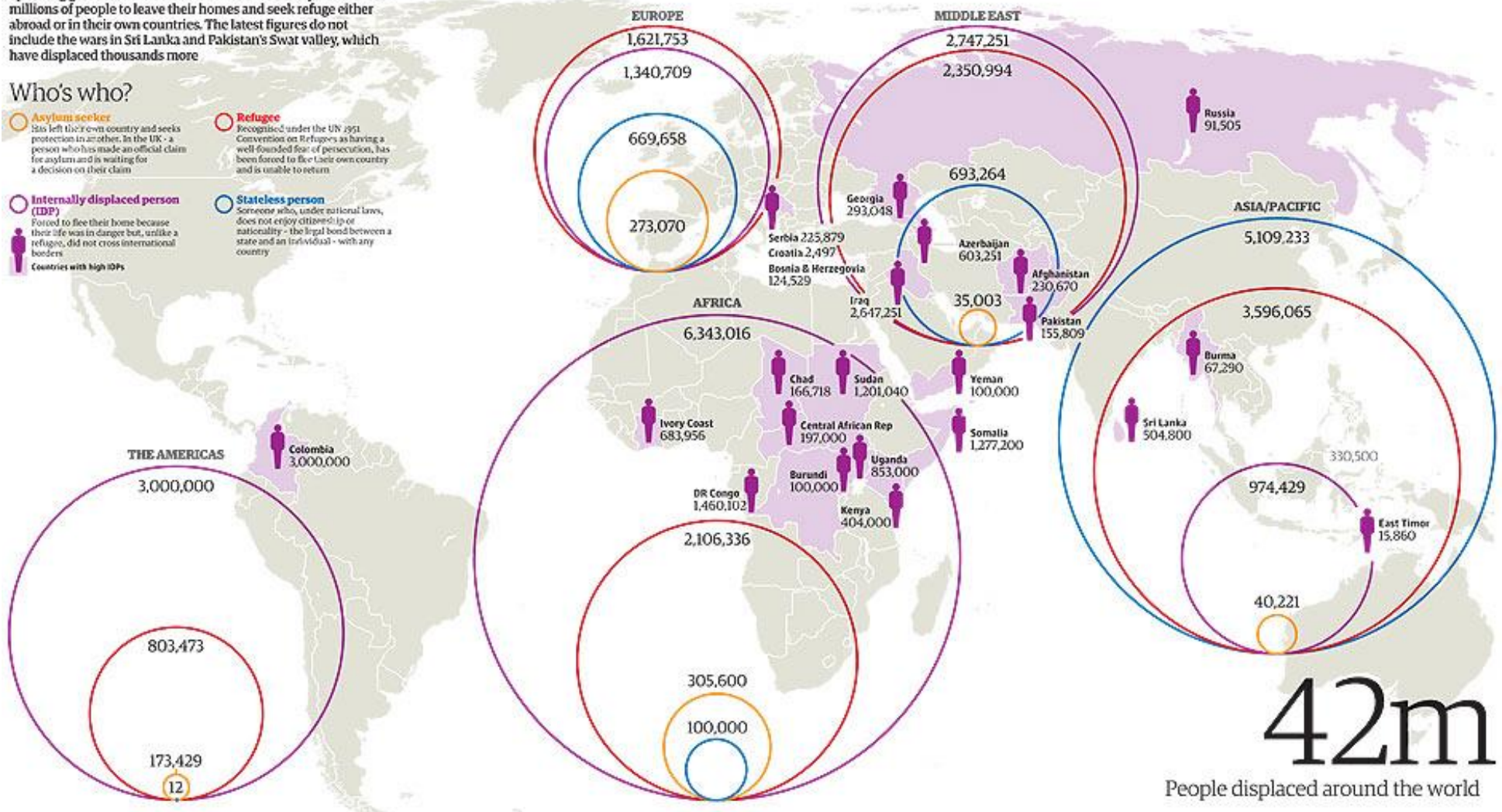
**Asylum seeker**  
Has left their own country and seeks protection in another. In the UK - a person who has made an official claim for asylum and is waiting for a decision on their claim

**Refugee**  
Recognised under the UN 1951 Convention on Refugees as having a well-founded fear of persecution, has been forced to flee their own country and is unable to return

**Internally displaced person (IDP)**  
Forced to flee their home because their life was in danger but, unlike a refugee, did not cross international borders

**Stateless person**  
Someone who, under national laws, does not enjoy citizenship or nationality - the legal bond between a state and an individual - with any country

Countries with high IDPs



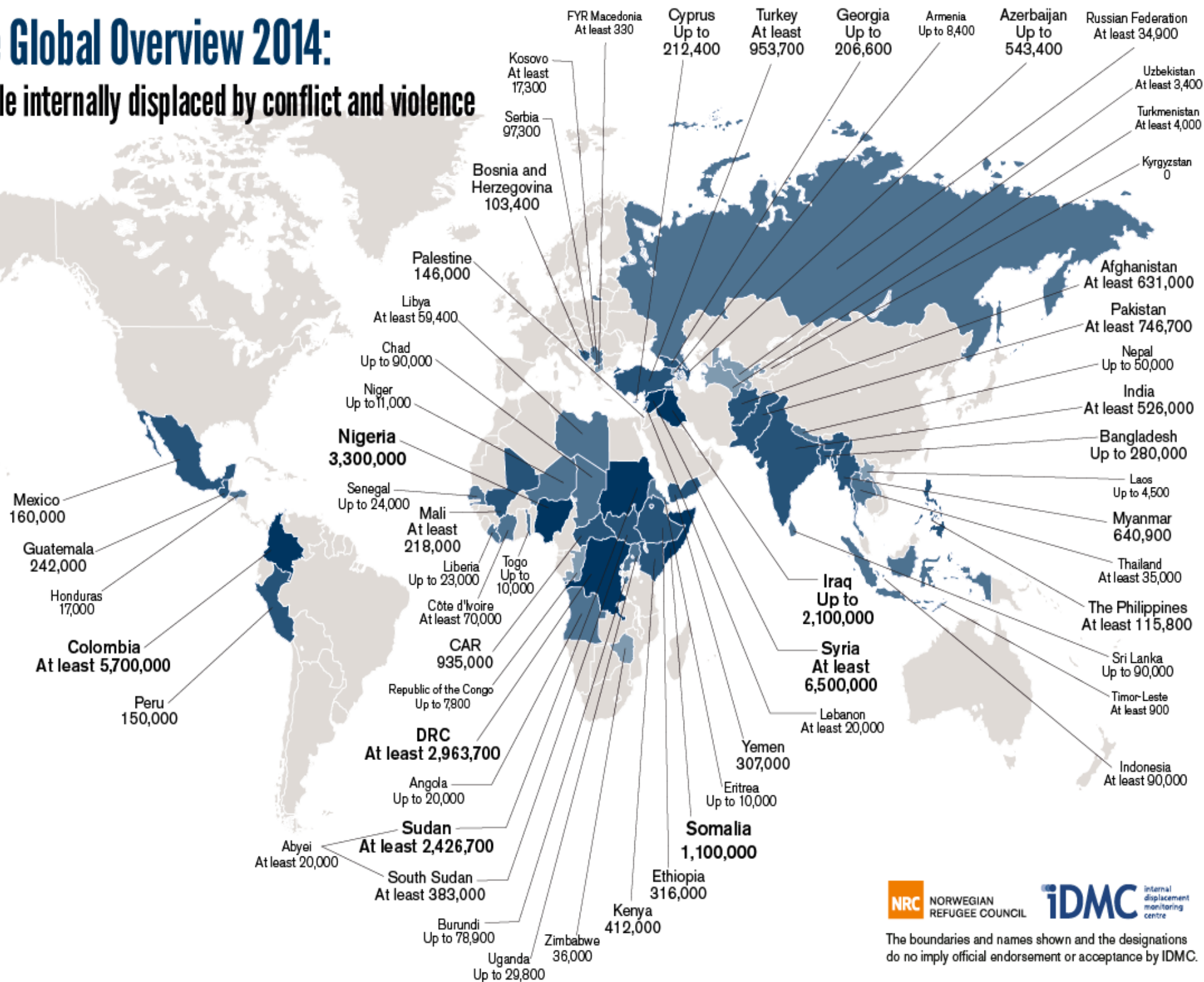
# Refugees

- Total of 15.2 million refugees at the beginning of 2013
  - 10.4 million (UNHCR)
  - 4.8 million (UNRWA)
- Refugees of concerns to UNHCR:
  - Spread around the world with half in Asia and 28% in Africa
  - Living conditions varying from well-established camps and collective centers to makeshift shelter or living in the open
  - Half living in urban areas.



# The Global Overview 2014:

## People internally displaced by conflict and violence



NORWEGIAN  
REFUGEE COUNCIL

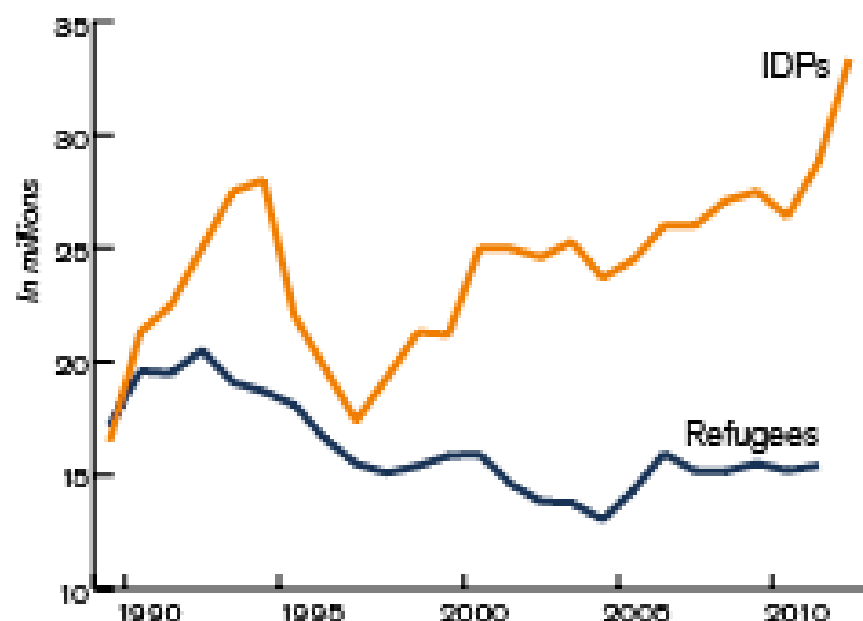


The boundaries and names shown and the designations do not imply official endorsement or acceptance by IDMC.

# IDPs by conflict and violence

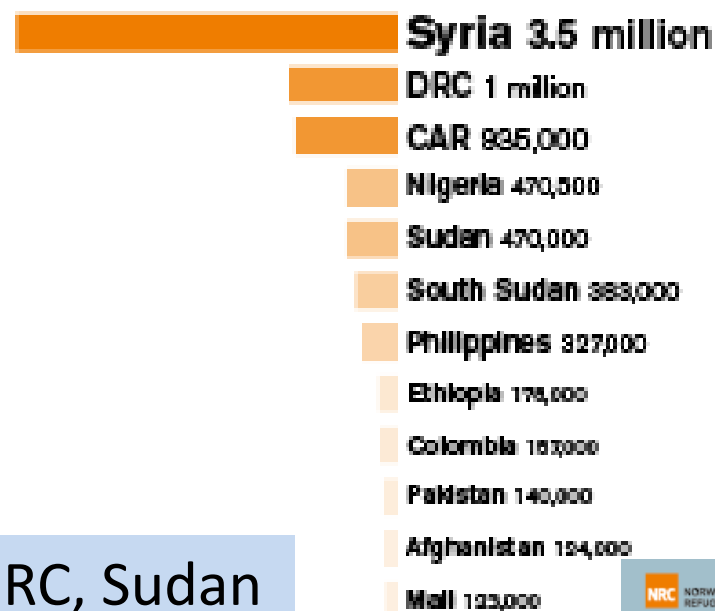
**33.3 million people** displaced by conflict and violence at the end of 2013

Proportion of IDPs and refugees fleeing conflict and violence from 1989 to 2013



**8.2 million** newly displaced in 2013

The 12 countries with the highest new displacement



63% of all IDPs: Syria, Colombia, Nigeria, DRC, Sudan  
43% of IDPs are from Syria alone

# Internal Displacement by Region

- **Sub Saharan Africa: 12.5 million**
- **Middle East and North Africa: 9.1 million**
- **The Americas: 6 million**
- **Europe, Caucasus, Central Asia: 2.2 million**
- **South and South East Asia: 3.2 million**



# Causes of Mortality and Morbidity:

**60–80%** of all deaths among displaced groups due to **measles, diarrheal diseases, acute respiratory infections, malaria and malnutrition**

**85%** of refugees originate from, and remain within, countries with high burdens of **tuberculosis**

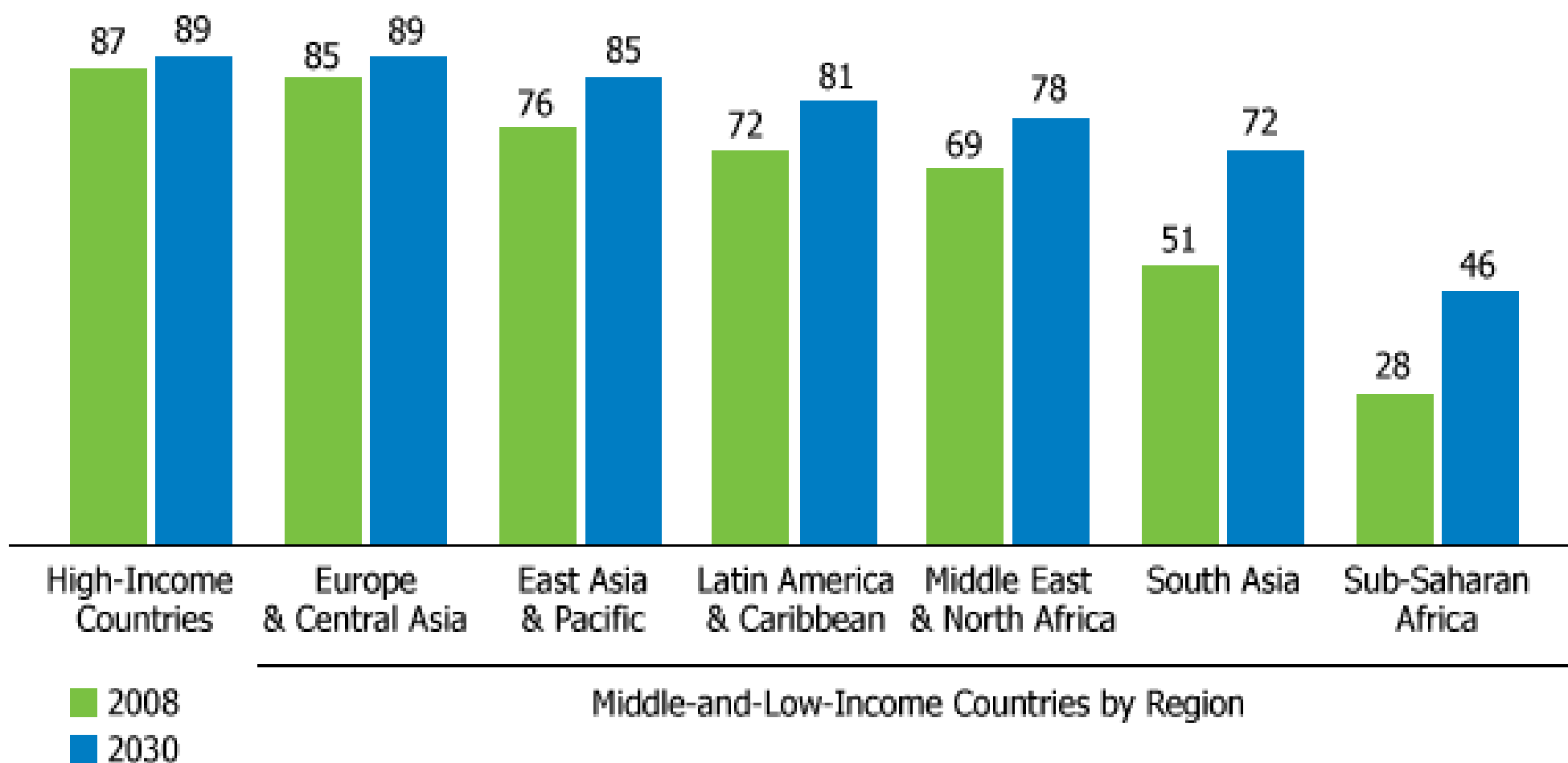
**25 million**, adults and children living with **HIV** in sub-Saharan Africa, the region currently experiencing the highest concentration of global emergencies

**> 90%** of cases of **neglected tropical and vector borne diseases** are in conflict settings

**75-80%** those living in conflict and insecurity are women and adolescent girls who need **reproductive health**

**33 of 50 countries** affected by conflict rank **lowest in mother and children's indicators** (i.e. health, contraceptive use, infant mortality)

# Percent of Total Deaths Attributed to NCDs





# Causes of Mortality and Morbidity:

**60–80%** of all deaths among displaced groups due to **measles, diarrheal diseases, acute respiratory infections, malaria and malnutrition**

**85%** of refugees originate from, and remain within, countries with high burdens of **tuberculosis**

**25 million**, adults and children living with **HIV** in sub-Saharan Africa, the region currently experiencing the highest concentration of global emergencies

**> 90%** of cases of **neglected tropical and vector borne diseases** are in conflict settings

**75-80%** those living in conflict and insecurity are women and adolescent girls who need **reproductive health**

**33 of 50 countries** affected by conflict rank **lowest in mother and children's indicators** (i.e. health, contraceptive use, infant mortality)

**From 10% to 20%,** common **mental health disorders** double in emergencies

**80%** of **NCD-related deaths** occur in developing countries, which face the greatest burden from global and regional conflict as well as increased vulnerability to the effects of climate change and natural disasters

# Humanitarian Emergencies: New Imperatives

- Refugees in non-traditional settings
- Burden on host countries and their health systems
- Broad needs of displaced people
  - Acute communicable diseases
  - Maternal and child health
  - Nutrition
  - Chronic conditions:
    - Communicable: HIV, Tuberculosis
    - Non-communicable: e.g. diabetes, heart disease, mental illness
  - Sexual and reproductive health
  - Others
- Needs of workers engaged in humanitarian assistance





# Aleppo Diary

by Fouad Mohammed Fouad

## **Writing is pain.**

And the blood that drips down the screen pollutes the atmosphere  
staining the couch with what looks like dried coffee, which we  
touch with trembling fingers so we don't get infected.

We manage with broken backs as if going to hell seeing dark red -  
no, brown as well - which deposits a residue like rust in the soul.

We stroke their old heads then turn aside to lick away the tears.

Those who crawl from street to screen leave green traces on the  
asphalt that spring into bushes of basil; they toss us a flower and  
die in haste to spare our shame.

Now you've entered the sacred valley, take off your shoes and walk  
on broken glass.