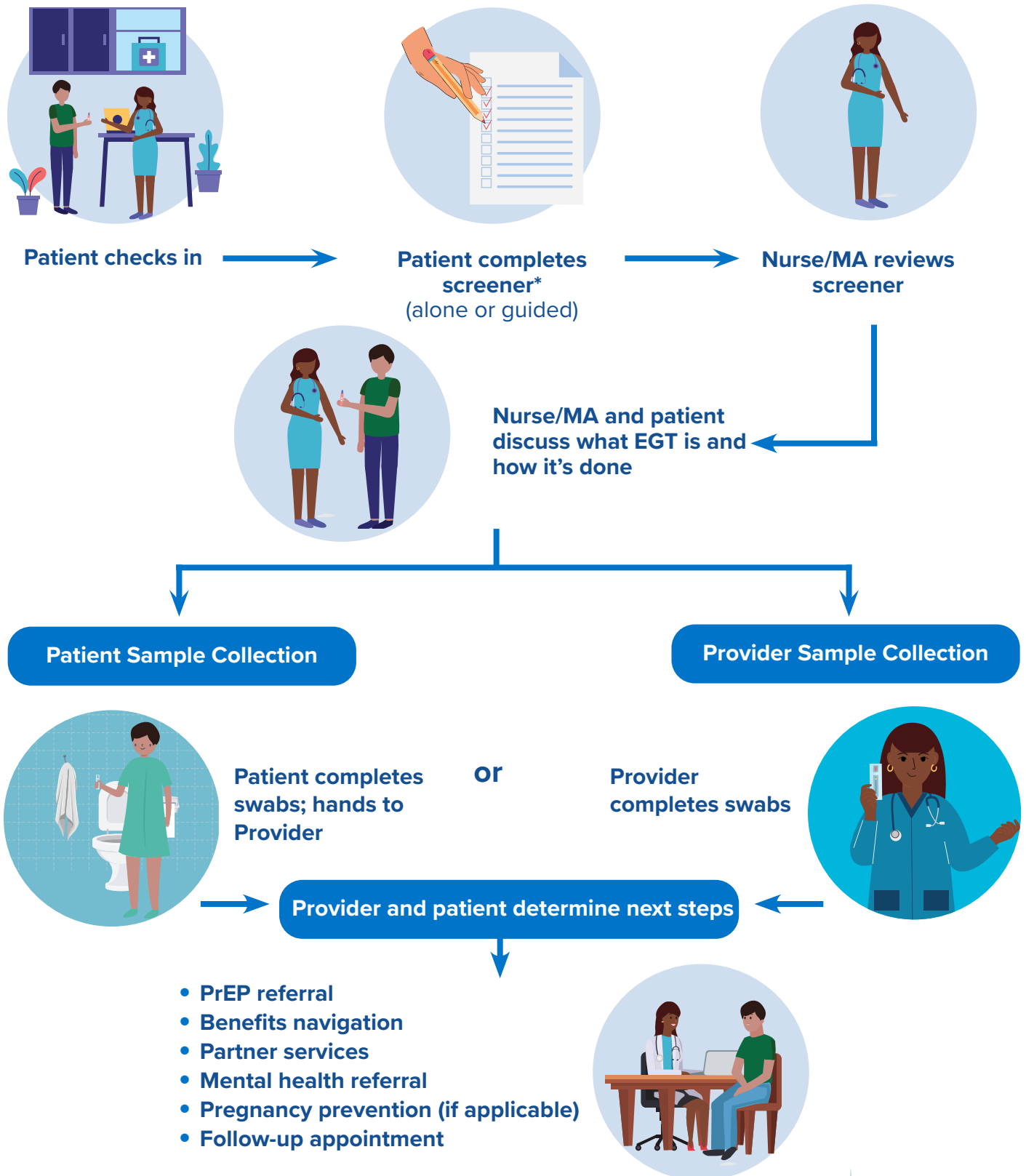


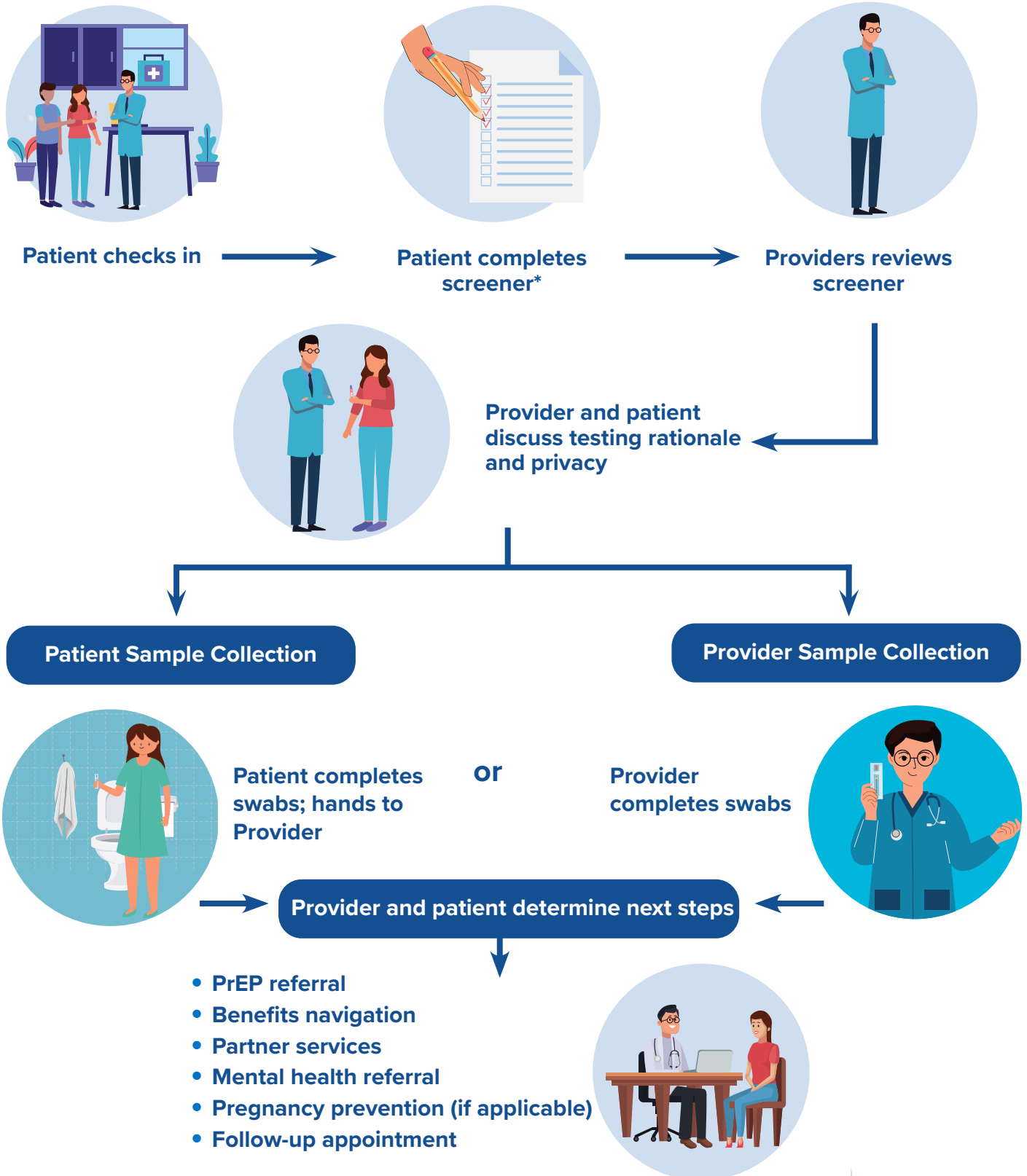
Nurse/MA-Led Model of Care



This figure depicts one model of EGT that relies more on nursing and MA staff; patient may have a choice between self-collection of three-site testing or provider collection

* Refer to our Sample Screeners in our Toolkit

Provider-Led Model of Care



This figure depicts one model where the provider is the one to introduce EGT; patient may have a choice between self-collection of three-site testing or provider collection

* Refer to our Sample Screeners in our Toolkit